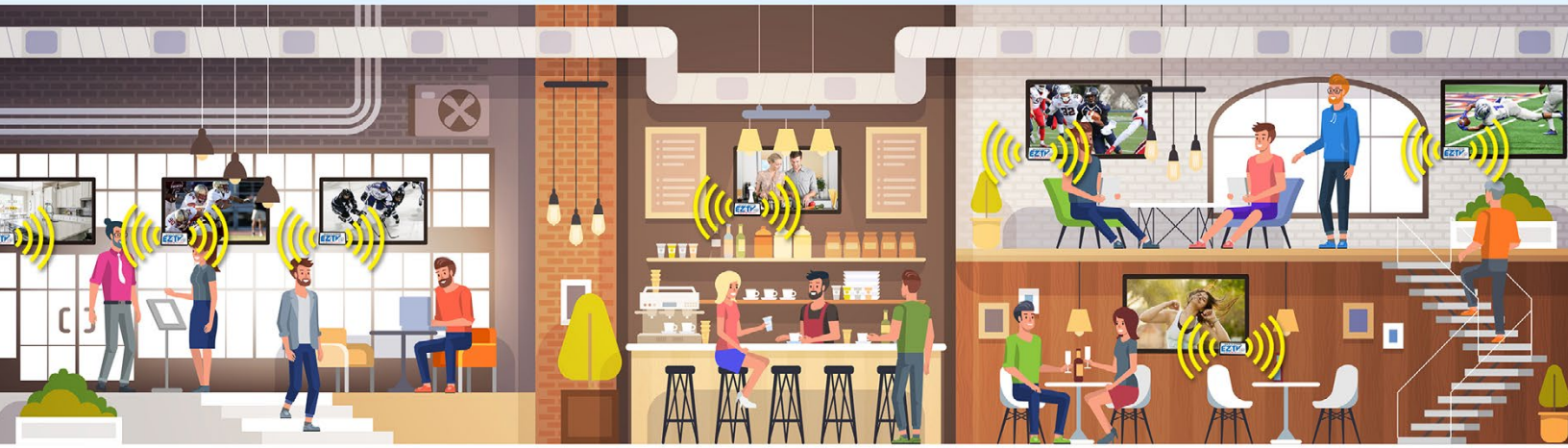


MULTI-TV SYSTEMS 

EZTV

Control System
with Mesh Technology

The Answer to Easily Controlling Multiple TVs from a Single Touch Screen



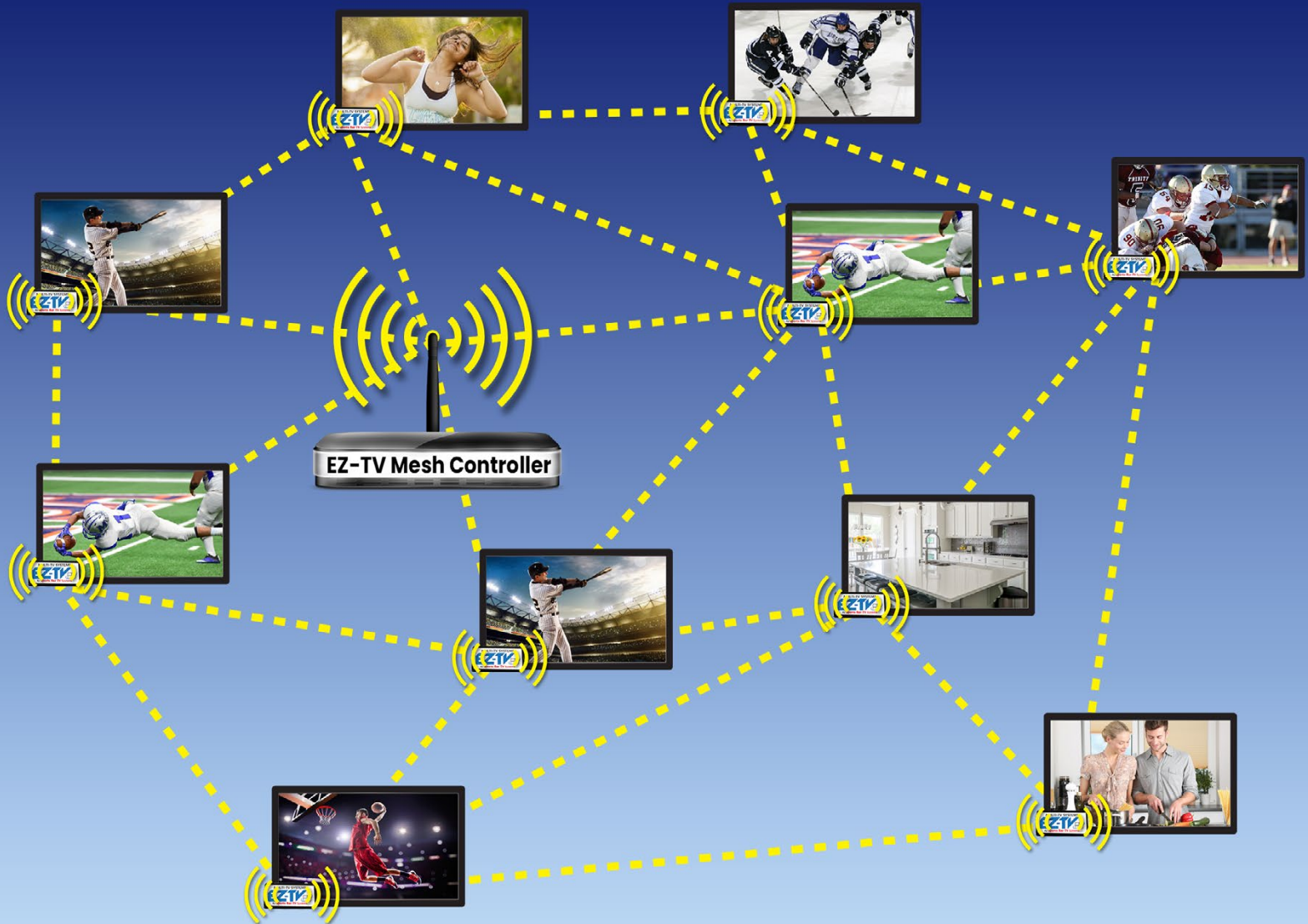
Designed for venues that already have a TV system installed to easily add unified control without rewiring.

- No wires to run, completely wireless system
- Controls all your TV's from Tablets, Smart Phones or computers
- TVs can be operated in groups or individually
- Optional Table top or wall mount Touch panels available
- Easy install, Just connect base unit to your wifi and place one of our Mesh Nodes at each TV or set top box
- Sports Bar TV Systems Staff provide remote configuration setup & support
- Works with set top boxes located at each TV or Matrix Routers
- No Monthly expenses!



For More Info: 865.567.1313
www.eztvsystems.com

How Does A Mesh Network Work?



Simply put, a Mesh network uses radios that communicate with each other to pass information from radio to radio until it gets to its destination. This kind of system allows for very large installations as commands hop from one EZ-TV TV module to the next with a range of 50 feet between TV's we can cover the largest of venues!

MULTI-TV SYSTEMS 
EZ-TV 
Control System
with Mesh Technology

For More Information on how you can add a EZ-TV Mesh Control System to your current multiple TV set-up
Call: **865.567.1313**
or visit: **www.eztvsystems.com**